

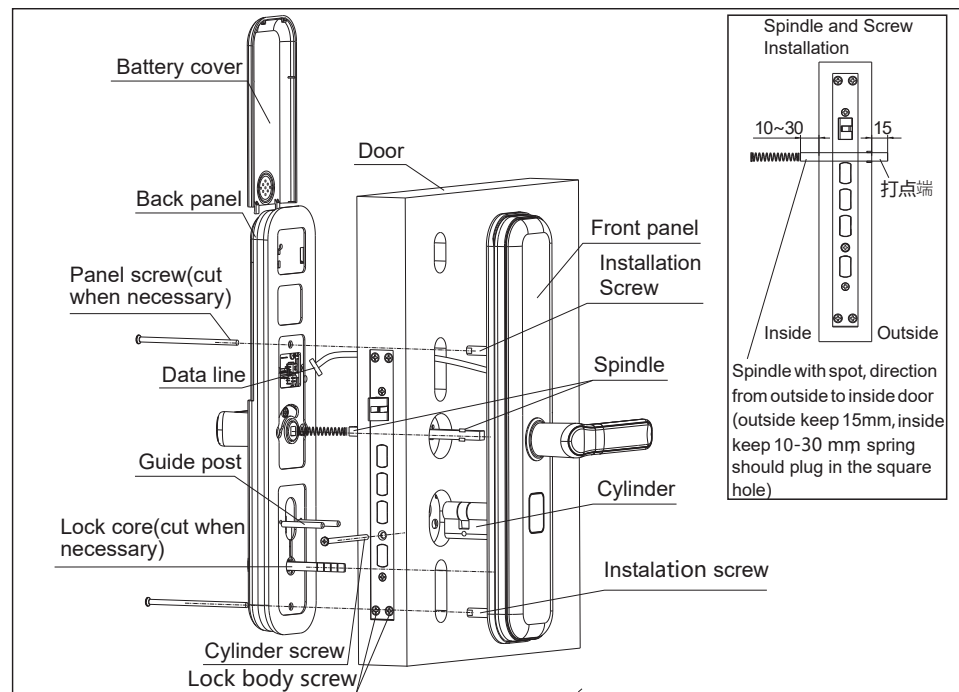
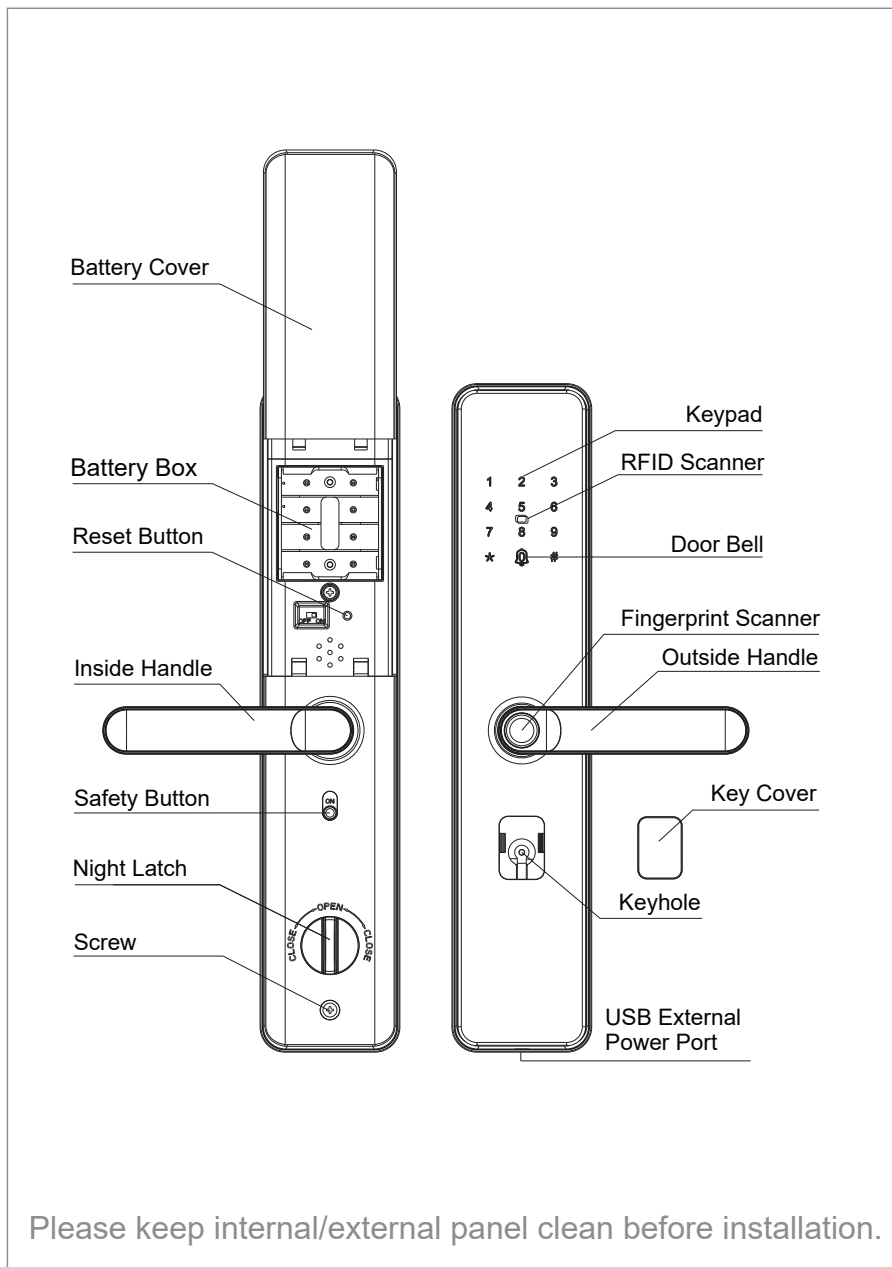


User's Guide

YDME 100 NxT



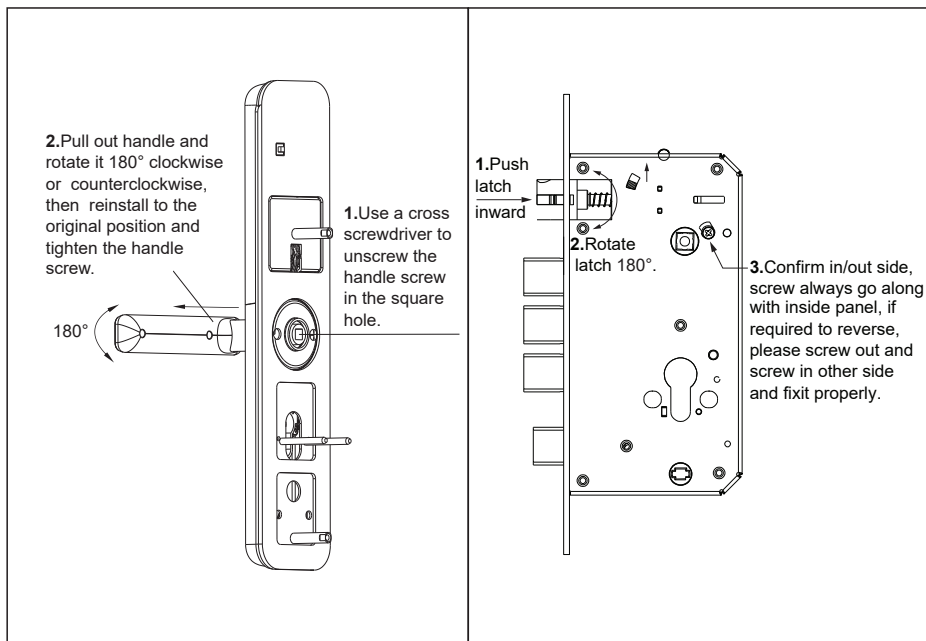
Important Tips:



Panel and lock body installation steps.

1. Adjust latch direction according to door opening side.
2. Lock body and cylinder installation: Put lock body into hole made then tighten screw, put cylinder into lock body guard hole, after that tighten cylinder screw.
3. **Panel Installation**
 - a. Change handle according to door opening side put stud and guidepost on front panel part at same time. Put spring into square hole, cut spindle and lock core when necessary.
 - b. Put spindle into lock body (follow drawing), take data line from above lock body into inside door, spindle and stud should be in corresponding hole, front panel should be compactly installed on the door.
 - c. Connect the main board cable to the corresponding interface of the back panel.
 - d. Put spindle, cylinder and snib core into corresponding position, tighten back panel onto the door and tight panel installation screw.
 - e. Try handle & snib, check if it works well otherwise adjust panel & cylinder to make sure it can work smoothly.
 - f. Install battery cover, try opening by fingerprint, RFID card or pin code or manual key.

Change Handle Direction



Product Features:

- Multiple ways to access: Fingerprint, Pin Code, RFID Card, & Mechanical Key.
- Fingerprint: Advanced semiconductor sensors with 360° scanner.
- Pin code: Elegant keypad with code scrambling feature. Before correct password user can input 12 digits which can avoid password peeping.
- Dual authentication mode: Fingerprint mode (master + common user), fingerprint + pin code, fingerprint + RFID card mode, After this setting dual authentication will be required to access the lock at same time to open the door, suitable for high security access.
- Master /User management: Master has the right to make different user. Lock can have 9 master user (can be fingerprint, pin code or card). Total user capacity is 250 with capping of 50 fingerprint users.
- Door Bell: When lights are off "0" can be used as door bell.
- Alarm: Tamper, low battery alarm and password protection.
- Lock will sound alarm in case of tampering with door or lock, when battery is low or when repeatedly wrong password is used.

Important Instructions:

1. After installation of lock please reset lock to factory default mode.
2. Handle is the key part for opening and closing door, and its flexibility ratio directly influences the usage of door lock, hence, don't hang articles on handle.
3. Gently press fingerprint on the fingerprint sensor for registration of fingerprint. Please don't press with great force to prevent scratching the fingerprint sensor.
4. This lock uses 4 AA high-energy alkaline batteries (1.5V). When it prompts "the voltage is low, please replace battery" for the first time, the door can be opened for about 100 times as per different battery capacities; At this time, the battery should be replaced promptly to avoid inconvenience due to the exhausted battery.
5. After continuous 5 times wrong fingerprint, card or code usage lock will be locked for 90 seconds.

Operations Guide:

1. **Reset factory default:** Press RESET at back of lock for 5 seconds, voice will prompt reset succeed.
2. **Lock Settings:**
 - 2.1 **Administrator Settings:** Touch screen keypad for lights on and press # for 2 seconds, and press 1 for Administrator settings
 - Press 1 again for **addition of Master User.**
 - Fingerprint: Scan Fingerprint 5 times on Fingerprint scanner for addition of Fingerprint as master User. After successful addition, voice prompts "1X1X Successful". Here 1X1X- represents serial # of registered user.
 - RFID Card: Scan RFID card in front of RFID Scanner. After successful addition, voice prompts "1X1X Successful".
 - Pin Code: Enter 8 Digit Pin Code -> Press # -> Repeat Pin Code-> Press # After successful addition, voice prompts "1X1X Successful".
 - To go back to the main menu press *
 - Press 2 for **Deletion of Master User.**
 - System will prompt "Please input number"
 - Please input respective user number "1X1X" to delete
 - Press # to confirm

2.2 User Settings: Touch screen keypad for lights on and press # for 2 seconds, and Voice prompts "Please input administrator input". Verify the administrator access verification and press 2 for User settings.

- Press 1 again for **User Addition**
- Finger Print: Scan Fingerprint 5 times on Fingerprint scanner for addition of Fingerprint as master User. After successful addition, voice prompts "1X1X Successful". Here 1X1X- represents serial # of registered user.
- RFID Card: Scan RFID card in front of RFID Scanner. After successful addition, voice prompts "1X1X Successful".
- Pin Code: Enter 8 Digit Pin Code-> Press # -> Repeat Pin Code-> Press # After successful addition, voice prompts "1X1X Successful".
- To go back to the main menu press *.
- Press 2 for **User Deletion**
- System will prompt "Please input number".
- Please input respective user number "1X1X" to delete. Press # to confirm.

2.3 System Settings: Touch screen keypad for lights on and press # for 2 seconds, and Voice prompts "Please input administrator input". Verify the administrator access verification and press 3 for System settings.

- Press 1 again for **Time Settings**
- Lock will share current time updated on the lock
- To Change enter new date & time in the format YYYYMMDDHHMM and press #, where YYYY represents Year, MM- Month, DD- Date, HH- Hour & press #, where YYYY represents Year, MM- Month, DD- Date, HH- Hour & MM Minutes. To go back to the main menu press *
- Press 2 for **Lock Number Modification**
- Lock Number means number assigned by you to a particular lock if you have installed multiple locks at your place.
- Lock will share current assigned number.
- To Change enter new lock number (4 Digits) & press #. Lock will prompt new number for confirmation. To go back to the main menu press *
- Press 3 for **Voice Settings**
- Press 4 to decrease and Press 6 to increase the volume of lock.
- Press 4 for **Unlock Mode**
- Unlock Mode means to allow opening of lock by single or dual authentication. In Single authentication, any single authorized user can open the lock, however in Combination Unlock access credentials of two authorized users are required for lock opening.

- Press 1 for Single Unlocking Access
- Press 2 for Dual or Combination Unlock
- Press 3 for Time to Unlock (Time period for lock to auto relock again). Usual auto re- lock period is 6 Seconds after door is closed. Range is 1-9 Seconds.
 - Press 2 to increase time to re-lock
 - Press 8 to reduce time to re-lock

2.4 Reboot System: Touch screen keypad for lights on and press # for 2 seconds, and Voice prompts "Please input administrator input". Verify the administrator access verification and press 4 for System Reboot.

- Lock will ask to authorize administrator access.
- After successful verification of administrator password- lock will reboot itself and prompt initialization successful.

2.5 Information Inquiry: Touch screen keypad for lights on and press # for 2 seconds, and Voice prompts "Please input administrator input". Verify the administrator access verification and press 3 for System settings.

- Press 1 again for **Record Enquiry**
 - Lock will share last usage record. To go back to the main menu press*
- Press 2 for **Information on User**
 - Enter the # of user for which information is required
 - Lock will share registration time & date of the user for which information is required. To go back to the main menu press *.
- Press 3 for **Storage Capacity**
 - Storage Capacity will indicate number of number of registered fingerprint, pin & RFID card users and # of available capacity for user addition.



1. Please scan your fingerprint 5 times on scanner for user addition.
2. Please enter selected password twice to be recorded in system. Length of password will be 8 Digits.
3. Card is registered after voice prompts "add user" & scan card near RFID scanner for confirmation.
4. After successful registration press * to exit.
5. When Deleting fingerprint, one master user in fingerprint has to be left.